

**NC 12 Improvements**

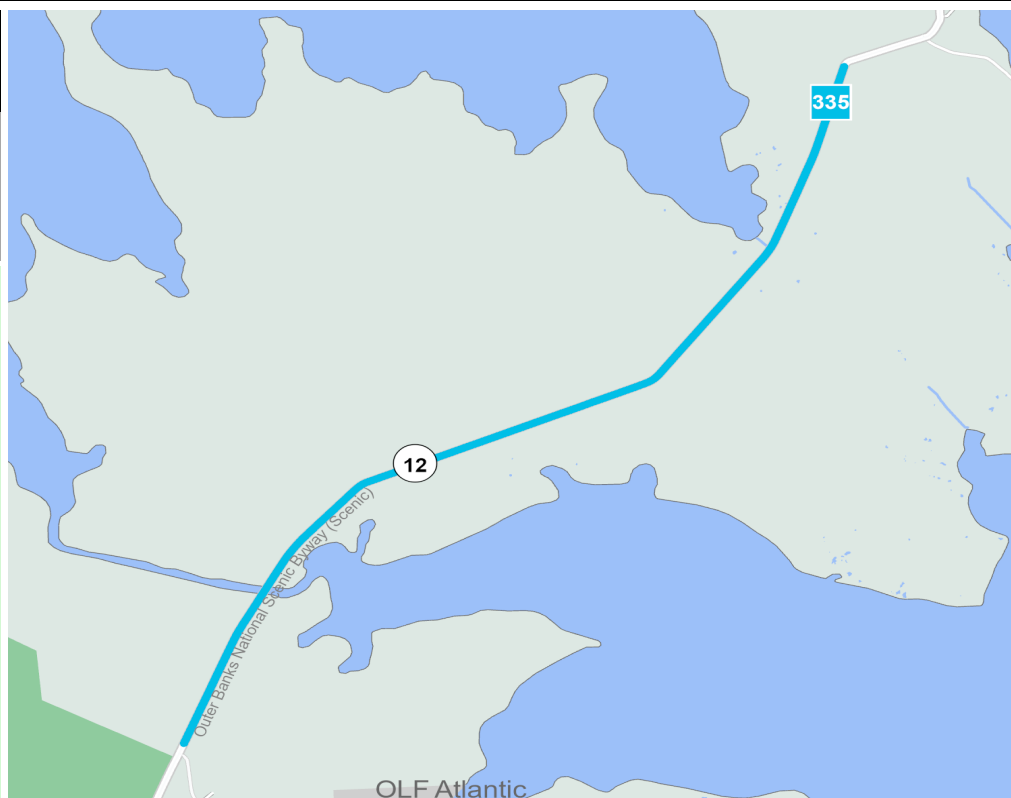
Along NC 12

Local ID: **CART20038-H**Purpose: **Facility Deficiencies**Improvement: **Improve Existing****Identified Need**

There is a need to upgrade this area due to resiliency concerns, and to improve the safety and operations.

**Recommendation**

The recommendation is to widen the existing shoulders to accommodate a vehicle breakdown, rip rap the slopes, and install guardrail.



| Local ID #                     | Improve | New Location      | Local ID # | Improve | New Location |
|--------------------------------|---------|-------------------|------------|---------|--------------|
| Congestion / Mobility          | #       | Interchange       | ●          | □       | ■            |
| Access Management / Operations | #       | Bridge / Overpass | ●          | ○       | ●            |
| Modernization                  | #       | Intersection      | ●          | ∠       | ▲            |
| Other                          | #       |                   |            |         |              |

**Proposal At A Glance**

|                     |                           |
|---------------------|---------------------------|
| Highway Class       | Modernization             |
| Facility Type       | Major Thoroughfare 2-lane |
| Typical Section     | -                         |
| Section Options     | -                         |
| Length (miles)      | 5.70                      |
| Existing ROW (feet) | 60                        |
| Safety Risk Score   | -                         |

**Proposal Data: 2019 Base Year 2050 Future Year**

| Improved Route        | Existing                  | Without Proposal | With Proposal             |
|-----------------------|---------------------------|------------------|---------------------------|
| <i>Facility Type</i>  | Major Thoroughfare 2-lane | -                | Major Thoroughfare 2-lane |
| <i>Travel Lanes</i>   | 2                         | -                |                           |
| <i>Volume (vpd)</i>   | 800                       | 1400             | 1400                      |
| <i>Capacity (vpd)</i> | 16400                     | 16400            | 16400                     |

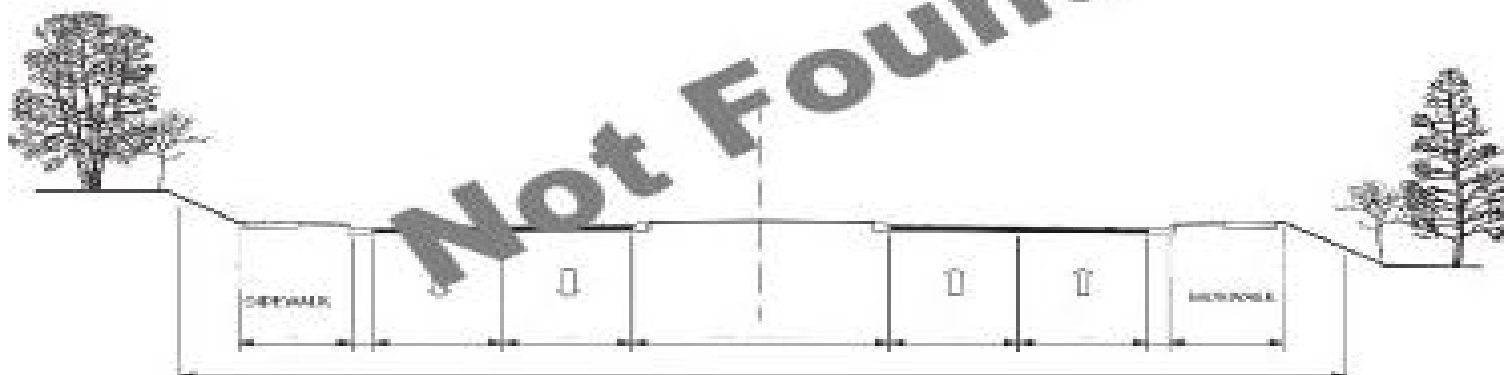
**Capacity Data: Year**

|  |   |
|--|---|
| Facility will be Approaching Capacity (>80%) | - |
| Facility will be Over Capacity (>=100%)      | - |



**Typical Section Options:**

None

**TYPICAL SECTION No.***Project History/Linkage to Other Plans*

This area was brought to the division as an area of concern from the citizens and as an area where better resiliency is needed.

All environmental data in the database was considered. This Project is within 150 feet of:

- 9 Benthic Habitat Feature(s)
- 22 Coastal Region Evaluation Of Wetland Significance Feature(s)
- 2 Fish Nursery Area Feature(s)
- 8 Flood Hazard Area Feature(s)
- 5 High Quality And Outstanding Resource Water Feature(s)
- 1 Impaired Waters Line Feature(s)
- 1 Impaired Waters Polygon Feature(s)
- 2 Landscape Habitat Indicator Guild Feature(s)
- 3 Major River Feature(s)
- 3 Managed Area Feature(s)
- 1 Mitigation Point(s)
- 12 Natural Heritage Element Occurrence Feature(s)
- 3 Natural Heritage Natural Area Feature(s)
- 40 Wetland Feature(s)
- 21 River And Stream Feature(s)
- 6 Lake And Pond Feature(s)
- 1 Protected Area Feature(s)
- 1 Regional Trail Feature(s)
- 3 Quality Monitored River And Stream Feature(s)
- 1 Target Local Watershed Feature(s)

This recommendation passes through one or more Census Blocks with the following characteristics:

- Between 25% and 50% identify as 65+
- Between 0% and 25% identify as African American
- Between 0% and 5% identify as Asian
- Between 0% and 1% identify as Hawaiian or Pacific Islander
- Between 0% and 1% identify as Hispanic and Latino
- 0% identify as Over 18 with Limited English Proficiency (LEP) - Asian and Pacific Islander
- 0% identify as Over 18 with Limited English Proficiency (LEP) - Indo-European
- 0% identify as Over 18 with Limited English Proficiency (LEP) - Other
- 0% identify as Over 18 with Limited English Proficiency (LEP) - Spanish
- Between 5% and 15% identify as Native American
- Between 1% and 5% identify as Two of More Races
- Between 5% and 15% identify as Below Poverty Line
- Between 0% and 15% identify as Households with No Car